

IC-36FI



FEATURES

- Monitor and control remotely with Wi-Fi connectivity
- Accepts custom panels for an integrated look within cabinetry or stainless-steel accessory panels and handles to match other Sub-Zero, Wolf, and Cove products\*
- Preserves frozen foods with frigid, dry air
- Creates a seamless look with single-door design in your kitchen
- Controls temperature within one degree of setpoint
- Locks in cold air with a magnetic door seal system
- Filters ice, removing contaminants, chlorine taste, and odor
- Yields ice automatically and “max ice” for additional production
- Control brightness with soft-on LED lighting

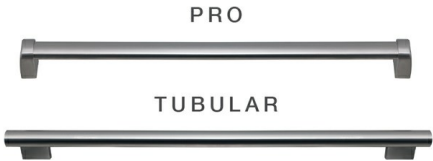
ACCESSORIES

- 48 3/8" Pro Handle
- 50 1/8" Tubular Handle
- Reduced Toekick Divider
- Stainless Steel Side Panel
- Stainless Steel Top Panel
- Water Filter
- Water Filter
- Dual Installation Kits
- Stainless Steel Door Panels With Pro Handle - 4" Toe Kick
- Stainless Steel Door Panels With Tubular Handle - 4" Toe Kick
- Stainless Steel Dual Installation Kickplates

Accessories are available through an authorized dealer.  
For local dealer information, visit [subzero-wolf.com/locator](https://subzero-wolf.com/locator).



HANDLE ACCESSORIES



PRODUCT DETAILS

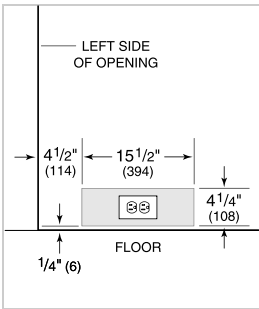
FREEZER

- LED freezer lights
- 3 adjustable wire shelves
- 5 adjustable freezer door bins
- 3 storage drawers
- Automatic ice maker with removable ice container

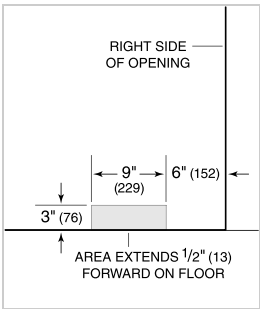
PRODUCT SPECIFICATIONS

Model	IC-36FI
Dimensions	36"W x 84"H x 24"D
Freezer Capacity	20 cu. ft.
Door Clearance	34 1/2"
Weight	435 lbs
Electrical Supply	115 VAC, 60 Hz
Electrical Service	15 amp dedicated circuit
Plumbing Supply	1/4" OD copper, braided stainless steel or PEX tubing
Plumbing Pressure	35–120 psi

ELECTRICAL



PLUMBING

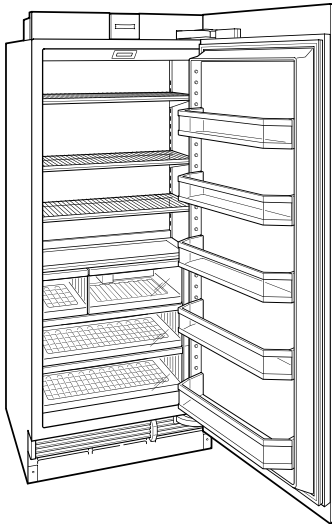


**NOTE:** The electrical outlet must be positioned with the grounding prong to the right of the thinner blades.

**PANEL SPECIFICATIONS** For complete panels specifications including width/height, weight requirements and thickness requirements visit [subzero-wolf.com/reveal](https://subzero-wolf.com/reveal).

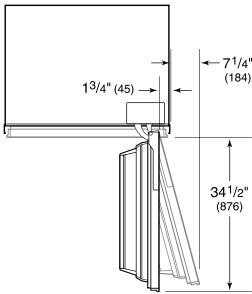
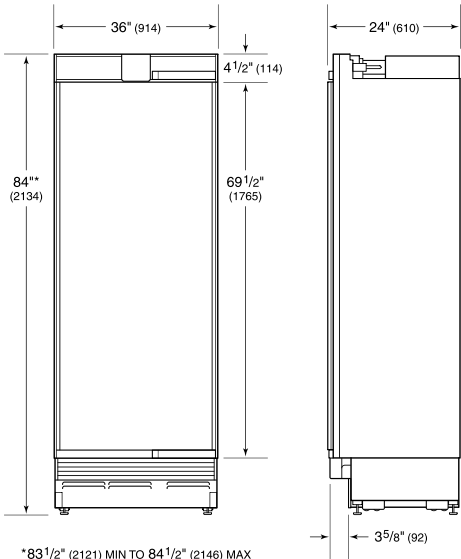
**NOTE:** Dimensions in parenthesis are in millimeters unless otherwise specified

INTERIOR VIEW

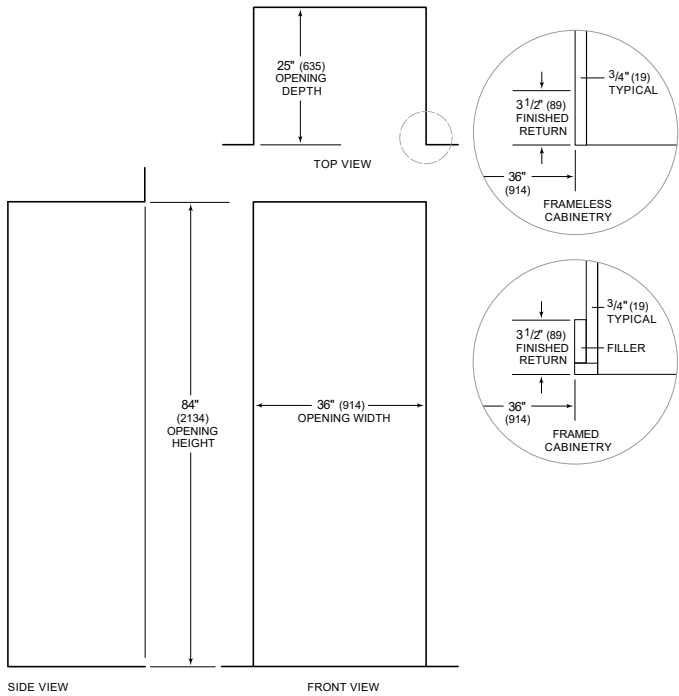


This illustration is intended for interior reference only and may not represent the exterior of the model being specified.

DIMENSIONS



STANDARD INSTALLATION



SIDE VIEW

FRONT VIEW

**NOTE:** 3 1/2" (89) finished returns will be visible and should be finished to match cabinetry